



All prices shown are exclusive of taxes such as VAT.

### MODELS

#### GXe LITE



Starting at 99.501,00 €

#### Weight optimised version

Standard equipment:

- ROTAX 912 UL – 80HP
- EFIS/EMS - DYNON FlightDEK 180
- XPDR - BECKER BXP6401
- COM - BECKER ARG201
- LED flap indicator
- BRS 6-1050 ballistic recovery system
- CFRP wing struts
- Standard decor

#### GXNXT



Starting at 112.488,00 €

#### High-end version

Standard equipment:

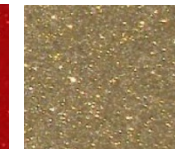
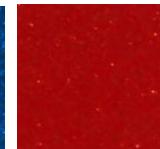
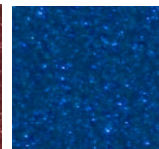
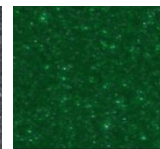
- ROTAX 912 ULS – 100HP
- EFIS/EMS - DYNON SkyView SV-D700 7" screen
- XPDR - SV-XPDR-261
- GPS - GARMIN aera500
- COM/Audio Panel - PS Engineering PAR200A w/ BT
- BRS 6-1050 ballistic recovery system
- Comfort & Safety Package
- Premium decor

Optional equipment (for detailed list see back side): CFRP wing struts, optional avionics, traffic alert system, AEROSUN landing lights, MAGNUM ballistic recovery system, leather seats, interior pads, different decors, glider towing clutch, ceiling hanging equipment, and many more

### COLOUR CHOICES



#### PREMIUM DECOR OPTIONS:



Silicium

Emerald Green

Cinnabar

Sapphire-Blue

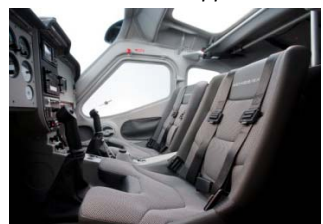
Fire Opal

Topaz



#### INTERIOUR DESIGN CHOICES:

leather-fabric & leather-cinnamo



### FACTS AND FIGURES

#### PERFORMANCE (912 ULS)

take-off roll distance	88 m
take-off distance	130 m
landing distance	185 m
manoeuvring load factor	+ 4,0 g / - 2,0 g
max. range	890 km
max. endurance (4.200 rpm)	6 h
fuel consumption (4.200 rpm)	13,4 l/h

#### SPEEDS

V <sub>SO</sub>	stall speed full flaps (40°)	63 km/h
V <sub>S</sub>	stall speed clean	72 km/h
V <sub>X</sub>	speed for best angle of climb	90 km/h
V <sub>Y</sub>	speed for best rate of climb	120 km/h
V <sub>A</sub>	manoeuvring speed	174 km/h
V <sub>CR</sub>	cruise speed (5.000 rpm)	180 km/h
V <sub>NO</sub>	normal operating speed	198 km/h
V <sub>H</sub>	max. speed in level flight	220 km/h
V <sub>NE</sub>	never exceed speed	249 km/h

#### WEIGHT & DIMENSIONS

empty weight (typ. GXe LITE)	291 kg
max. take-off weight MTOW	472,5 kg
useful load	185 kg
fuel capacity	84 l
wing span	9,32 m
overall length	6,48 m
height	2,28 m
wing area	10,97 m <sup>2</sup>
cabin width	1,19 m
main gear stance	2,1 m



## REMOSS GX - Pricing & Equipment

EQUIPMENT	GXe LITE	GXNXT
Rotax 912 ULS 74kW / 100HP	Pack. only	•
Rotax 912 UL 59kW / 80HP	•	-----
Slipper Clutch for Rotax 912 UL	807,00 €	-----
Slipper Clutch	Pack. only	•
Big Starter Engine	Pack. only	•
Airbox with carburetor heating and temperature indicator	625,00 €	•
Fire protection sleeves	90,00 €	•
Oil cooler flap	200,00 €	•
High-performance cooling system incl. oil thermostat	448,00 €	248,00 €
REMOSS stainless steel exhaust system	•	•
Electric fuel boost pump	•	•
Rotax Performance Package: Upgrade to Rotax 912 ULS 74kW / 100 HP, all accessories incl.	5.516,00 €	-----
NEUFORM CR-3-65 3-Blade Propeller	•	•
BRS 6-1050 ballistic recovery system	•	•
Magnum Lightspeed Softpack	- 517,00 € -	517,00 €
12V / 4.6Ah Battery	•	-----
12V / 6Ah Battery	32,00 €	•
12V / 12Ah Battery	230,00 €	198,00 €
12V / 12Ah Battery with Safety Package	198,00 €	-----
LED landing light HELLA	334,00 €	•
LED landing light Aerosun	681,00 €	347,00 €
LED landing light Aerosun with Safety Package	347,00 €	-----
LED tail light with ACL	529,00 €	•
LED wing position lights with ACL	1.075,00 €	•
LED panel lighting with dimmer	-----	•
ELT 406MHz	1.540,00 €	1.540,00 €
PowerFLARM incl. 2nd antenna, Audio & TIS-output	3.095,00 €	3.095,00 € <sup>1)</sup>
AIR Avionics TRX-1500 with display on EFIS	2.707,00 €	2.707,00 € <sup>1)</sup>
REMOSS Safety Package: 12V / 18Ah Battery, LED landing light HELLA, LED wing position lights with ACL, LED tail light with ACL	2.172,00 €	-----
REMOSS eLITE carbon seats, adjustable	•	-----
REMOSS carbon seats, adjustable, leather-fabric upholstery	210,00 €	•
REMOSS carbon seats, adjustable, leather-cinnamon upholstery	2.415,00 €	2.205,00 €
Door pockets & door sidewall fairings	188,00 €	•
Baggage compartment	620,00 €	•
Baggage nets	121,00 €	•
Sun visors	1.084,00 €	•
Heating system	368,00 €	•
Floor carpets	241,00 €	•
Additional air vents in windscreen	683,00 €	•
Interior Pads	497,00 €	497,00 €
Second power lever	165,00 €	•
REMOSS Jet-Stick	•	•
4-point seat belts	•	•
Blue windows with UV protection	•	•
REMOSS safety door lock system	•	•
REMOSS door ventilation	•	•
Controllable fresh air inlet	•	•
Circuit breakers	•	•
12V Receptacle	•	•
Jacks for headsets incl. ANR power	•	•
REMOSS Comfort Package: Door pockets & sidewall fairings, baggage compartment, luggage nets, sun visors, heating system, floor carpets, add. air vents, PM-3000 Intercom	3.301,00 €	-----

<sup>1)</sup> GXe LITE in combination with Garmin 695, Garmin 795 or FlymapL possible only

**Key:**

- Included / basic equipment
- ◊ optional equipment w/o surcharge
- not applicable / available for this version

EQUIPMENT	GXe LITE	GXNXT
Altimeter mBar / Hg, 57mm / 2 ¼ "	•	•
Airspeed indicator km/h / kts, 57mm / 2 ¼ "	•	•
C2400 Kompass	•	•
Garmin GPS aera500	1.355,00 €	•
Garmin GPS aera660	1.789,00 €	434,00 €
Garmin GPSMAP695	2.298,00 €	943,00 €
Garmin GPS aera795	2.825,00 €	1.470,00 €
FlymapL Germany	5.775,00 €	4.420,00 €
FlymapL Europe Maps	770,00 €	770,00 €
Flymap GSM Modem	831,00 €	831,00 €
PS Engineering PAR200A COM/Audio Panel	-----	•
NAV/COM-Bundle GNC255A NAV/COM & pm8000BTi Audio Panel	-----	4.705,00 €
Garmin GTR225A COM	-----	4.020,00 €
Garmin GNC255A NAV/COM	-----	5.612,00 €
Dynon SkyView 7" display SV-D700 in left panel	-----	•
Dynon Engine Monitoring Module for Rotax 912 UL/S SV-EMS-220/A	-----	•
Dynon Fuelflow Sensor	-----	•
Dynon EMS-Kit Rotax	-----	•
Dynon Air Data Module SV-ADAHRS-200/A	-----	•
Dynon GPS Antenna Module SV-GPS-250/A	-----	•
Dynon Class 2 Mode-S Transponder SV-XPNDR-262	-----	•
Dynon System Backup Battery SV-Bat-320	-----	•
Dynon SkyView 7" display SV-D700 in right panel with additional backup battery	-----	3.565,00 €
Dynon SV-ADSB-470 ADS-B-in module	-----	1.412,00 €
Dynon GPS Mapping Software SV-MAP-270	-----	610,00 €
Dynon FlightDEK D-180	•	-----
LED indicator for flap position	•	-----
BECKER Bundle COM AR6201, XPNDR BXP6401	•	-----
ps-engineering PM-3000 Intercom with audio input	765,00 €	-----
Winter pitot tube eLITE	•	-----
Dynon pitot tube with stall warning	56,00 €	•
Dynon Backup Battery	222,00 €	-----
Dynon Sensor Package: fuel flow, fuel pressure, ammeter, manifold pressure, EGT	1.028,00 €	-----
Dynon Performance Package: Dynon Sensor Package, Dynon pitot tube with stall warning, Dynon Backup Battery	1.149,00 €	-----
Metal wing strut including fairing	◊	•
CFRP wing strut	•	2.790,00 €
Metal landing gear, main wheels 4.00-6-6ply, nose wheel 4.00-4-4ply	•	•
Metal landing gear, main wheels 4.00-6-8ply, nose wheel 4.00-4-4ply	82,00 €	82,00 €
Metal landing gear, main wheels 15x6.0-6-6ply, nose wheel 4.00-4-4ply	175,00 €	175,00 €
Landing Gear Fairings (15x6.0 tires w/o wheel pants)	1.664,00 €	•
Standard Decor	•	◊
Premium Decor	228,00 €	•
GXiS Premium Decor	730,00 €	502,00 €
GXiS Special Decor	1.164,00 €	936,00 €
eLITE paintwork	•	-----
Flaps, electrically actuated	•	•
Hydraulic disc brakes w/ parking brake	•	•
Aluminium filler cap	•	•
Folding wings	368,00 €	•
Ceiling hanging equipment	98,00 €	98,00 €
Wing folding kit, not suitable for transport	294,00 €	294,00 €
Glider towing clutch	1.469,00 €	1.469,00 €

All prices shown are exclusive of taxes such as VAT.

Prices are ex works Pasewalk. Prices show surcharge compared to basic equipment.

Copyright REMOS AG. © REMOS May 2016

Misprint, colours, changes, pricing and availability subject to change. Pictures might include items which are not part of the basic configuration but are available as optional equipment with surcharge only. REMOS general terms and conditions apply. This fact sheet serves for general information only and is non-binding.