



All prices shown are exclusive of taxes such as VAT.

### MODELS

#### GXe LITE



Starting at \$ 156.741,00 (\*)

#### Weight optimised version

Standard equipment:

- ROTAX 912 ULS – 100HP
- EFIS/EMS - DYNON FlightDEK 180
- XPDR - BECKER BXP6401
- COM - BECKER AR6201
- LED flap indicator
- BRS 7-LSA ballistic recovery system
- Standard decor

#### GXnXES



Starting at \$ 167.908,00 (\*)

#### High-end version

Standard equipment:

- ROTAX 912 ULS – 100HP
- EFIS/EMS - DYNON SkyView SV-D700 7" screen
- XPDR - SV-XPDR-261
- GPS - GARMIN aera500
- COM/Audio Panel - PS Engineering PAR200A w/ BT
- ADS-B 2020 Mandate ready
- BRS 7-LSA ballistic recovery system
- Comfort & Safety Package

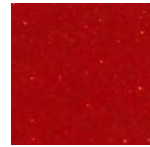
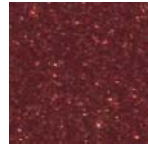
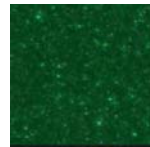
**Optional equipment (for detailed list see back side):** CFRP wing struts, optional avionics, traffic alert system, AEROSUN landing lights, MAGNUM ballistic recovery system, leather seats, interior pads, different decors, glider towing clutch, ceiling hanging equipment, and many more

(\*) Prices are turnkey delivery at your respective dealer and include shipping to and certification in the US.

### COLOUR CHOICES



#### PREMIUM DECOR OPTIONS:



Silicium

Emerald Green

Cinnabar

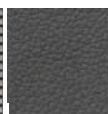
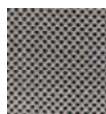
Sapphire-Blue

Fire Opal

Topaz

#### INTERIOUR DESIGN CHOICES:

leather-fabric & leather-cinnamo



### FACTS AND FIGURES

#### PERFORMANCE

take-off roll distance	615 ft
take-off distance	1,053 ft
landing roll distance	305 ft
landing distance	764 ft
manoeuvring load factor	+ 4.0 g / - 2.0 g
max. range	480 NM
max. endurance (4.200 rpm)	6.0 h
fuel consumption (4.200 rpm)	3.5 gph

#### SPEEDS

V <sub>SO</sub>	stall speed full flaps (40°)	42 kts
V <sub>S</sub>	stall speed clean	44 kts
V <sub>X</sub>	speed for best angle of climb	51 kts
V <sub>Y</sub>	speed for best rate of climb	60 kts
V <sub>A</sub>	manoeuvring speed	88 kts
V <sub>CR</sub>	cruise speed (5.000 rpm)	100 kts
V <sub>NO</sub>	normal operating speed	107 kts
V <sub>H</sub>	max. speed in level flight	110 kts
V <sub>NE</sub>	never exceed speed	134 kts

#### WEIGHT & DIMENSIONS

empty weight (typ. GXe LITE)	690 lbs
max. take-off weight MTOW	1,320 lbs
useful load	630 lbs
fuel capacity	22 gal.
wing span	30' 6"
overall length	21' 3"
height	7' 5"
wing area	118 ft <sup>2</sup>
cabin width	46.8"
main gear stance	6' 9"



## REMOs GX - Pricing & Equipment

EQUIPMENT	GXe LITE	GXnXES
<b>ENGINE &amp; PROPELLER</b>		
Rotax 912 ULS 74kW / 100HP	•	•
Slipper Clutch	•	•
Big Starter Engine	•	•
Airbox with carburetor heating and temperature indicator	•	•
Fire protection sleeves	•	•
High-performance cooling system incl. oil thermostat	•	•
REMOs stainless steel exhaust system	•	•
Electric fuel boost pump	•	•
NEUFORM CR-3-65 3-Blade Propeller	•	•
Altimeter mBar / Hg, 57mm / 2 ¼ "	•	•
Airspeed indicator km/h / kts, 57mm / 2 ¼ "	•	•
C2400 Kompass	•	•
Garmin GPS aera500	\$ 1.839,00	•
Garmin GPS aera510	\$ 3.069,00	\$ 1.230,00 <sup>1)</sup>
Garmin GPS aera660	\$ 2.429,00	\$ 590,00
Garmin GPSMAP695	\$ 3.119,00	\$ 1.280,00
Garmin GPSMAP696	\$ 4.767,00	\$ 2.928,00 <sup>1)</sup>
Garmin GPS aera795	\$ 3.835,00	\$ 1.996,00
Garmin GPS aera796	\$ 5.079,00	\$ 3.240,00 <sup>1)</sup>
PS Engineering PAR200A COM/Audio Panel	-----	•
NAV/COM-Bundle GNC255A NAV/COM & pm8000BTi Audio Panel	-----	\$ 6.385,00
Garmin GTR225A COM	-----	\$ 5.456,00
Garmin GNC255A NAV/COM	-----	\$ 7.617,00
Dynon SkyView 7" display SV-D700 in left panel	-----	•
Dynon Engine Monitoring Module for Rotax 912 UL/S SV-EMS-220/A	-----	•
<b>AVIONICS</b>		
Dynon Fuelflow Sensor	-----	•
Dynon EMS-Kit Rotax	-----	•
Dynon Air Data Module SV-ADAHRS-200/A	-----	•
Dynon GPS Antenna Module SV-GPS-2020 ADS-B-out	-----	•
Dynon Class 1 Mode-S Transponder SV-XPNDR-261	-----	•
Dynon System Backup Battery SV-Bat-320	-----	•
Dynon SkyView 7" display SV-D700 in right panel with additional backup battery	-----	\$ 3.565,00
Dynon SV-ADSB-470 ADS-B-in module	\$ 1.918,00	\$ 1.918,00
Dynon Autopilot for SkyView system	\$ 4.278,00	\$ 4.278,00
Dynon GPS Mapping Software SV-MAP-270	\$ 828,00	\$ 828,00
Dynon FlightDEK D-180	•	-----
LED indicator for flap position	•	-----
BECKER Bundle COM AR6201, XPNDR BXP6401	•	-----
ps-engineering PM-3000 Intercom with audio input	\$ 1.039,00	-----
Winter pitot tube eLITE	•	-----
Dynon pitot tube with stall warning	\$ 75,00	•
Dynon Backup Battery	\$ 302,00	-----
Dynon Sensor Package: fuel flow, fuel pressure, ammeter, manifold pressure, EGT	\$ 1.397,00	-----
Dynon Performance Package: Dynon Sensor Package, Dynon pitot tube with stall warning, Dynon Backup Battery	\$ 1.560,00	-----

<sup>1)</sup> subscription required for access to XM WX

**Key:**

- Included / basic equipment
- ◊ optional equipment w/o surcharge
- not applicable / available for this version

EQUIPMENT	GXe LITE	GXnXES
<b>SAFETY</b>		
BRS 7-LSA ballistic recovery system	•	•
Magnum 601 ballistic parachute	\$ -256,00	\$ -256,00
12V / 6Ah Battery	•	•
12V / 12Ah Battery	\$ 269,00	\$ 269,00
LED landing light HELLA	•	-----
LED landing light Aerosun	\$ 470,00	•
LED tail light with ACL	•	•
LED wing position lights with ACL	•	•
LED panel lighting with dimmer	-----	•
ELT 406MHz	•	•
PowerFLARM incl. 2nd antenna, Audio & TIS-output <sup>2)</sup>	-----	-----
AIR Avionics TRX-1500 with display on EFIS <sup>2)</sup>	-----	-----
<sup>2)</sup> GXe LITE in combination with Garmin 695/696 or Garmin 795/796 possible only		
<b>INTERIOR</b>		
REMOs eLITE carbon seats, adjustable	•	-----
REMOs carbon seats, adjustable, leather-fabric upholstery	\$ 285,00	•
REMOs carbon seats, adjustable, leather-cinnamon upholstery	\$ 3.278,00	\$ 2.993,00
Door pockets & door sidewall fairings	\$ 256,00	•
Baggage compartment	\$ 842,00	•
Baggage nets	\$ 165,00	•
Sun visors	\$ 1.472,00	•
Heating system	\$ 501,00	•
Floor carpets	\$ 328,00	•
Additional air vents in windscreen	\$ 927,00	•
Interior Pads	\$ 676,00	\$ 676,00
Second power lever	\$ 225,00	•
REMOs Jet-Stick	•	•
4-point seat belts	•	•
Blue windows with UV protection	•	•
REMOs safety door lock system	•	•
REMOs door ventilation	•	•
Controllable fresh air inlet	•	•
Circuit breakers	•	•
12V Receptacle	•	•
Jacks for headsets incl. ANR power	•	•
REMOs Comfort Package: Door pockets & sidewall fairings, baggage compartment, luggage nets, sun visors, heating system, floor carpets, add. air vents, PM-3000 Intercom	\$ 4.481,00	-----
<b>EXTERIOR</b>		
Metal wing strut including fairing	•	•
CFRP wing strut	\$ 3.786,00	\$ 3.786,00
Metal landing gear, main wheels 4.00-6-8ply, nose wheel 4.00-4-4ply	•	•
Matel landing gear, main wheels 15x6.0-6-6ply, nose wheel 4.00-4-4ply	\$ 127,00	\$ 127,00
Landing Gear Fairings (15x6.0 tires w/o wheel pants)	•	•
Standard Decor	•	◊
Premium Decor	\$ 310,00	•
GXIS Premium Decor	\$ 991,00	\$ 681,00
GXIS Special Decor	\$ 1.579,00	\$ 1.269,00
eLITE paintwork	•	-----
Flaps, electrically actuated	•	•
Hydraulic disc brakes w/ parking brake	•	•
Aluminium filler cap	•	•
Folding wings	\$ 501,00	•
Ceiling hanging equipment	\$ 134,00	\$ 134,00
Wing folding kit, not suitable for transport	\$ 400,00	\$ 400,00
Glider towing clutch	\$ 1.995,00	\$ 1.995,00

All prices shown are exclusive of taxes such as VAT.  
Prices show surcharge compared to basic equipment.

Misprint, colours, changes, pricing and availability subject to change. Pictures might include items which are not part of the basic configuration but are available as optional equipment with surcharge only. REMOS general terms and conditions apply. This fact sheet serves for general information only and is non-binding.