



All prices shown are exclusive of taxes such as VAT.

### MODELS

#### GXe LITE

Starting at 108.361,00 €



#### Weight optimised version

Standard equipment:

- ROTAX 912 ULS – 100HP
- EFIS/EMS - DYNON FlightDEK 180
- XPDR - BECKER BXP6401
- COM - BECKER ARG201
- LED flap indicator
- BRS 7-LSA ballistic recovery system
- Standard decor



#### GXNXT

Starting at 115.936,00 €



#### High-end version

Standard equipment:

- ROTAX 912 ULS – 100HP
- EFIS/EMS - DYNON SkyView SV-D700 7" screen
- XPDR - SV-XPDR-261
- GPS - GARMIN aera500
- COM/Audio Panel - PS Engineering PAR200A w/ BT
- BRS 7-LSA ballistic recovery system
- Comfort & Safety Package
- Premium decor



Optional equipment (for detailed list see back side): CFRP wing struts, optional avionics, traffic alert system, AEROSUN landing lights, MAGNUM ballistic recovery system, leather seats, interior pads, different decors, glider towing clutch, ceiling hanging equipment, and many more

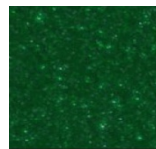
### COLOUR CHOICES



#### PREMIUM DECOR OPTIONS:



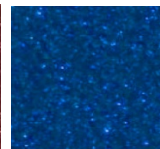
Silicium



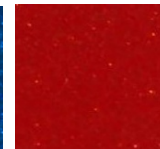
Emerald Green



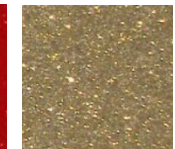
Cinnabar



Sapphire-Blue



Fire Opal

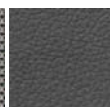


Topaz



#### INTERIOUR DESIGN CHOICES:

leather-fabric & leather-cinnamo



### FACTS AND FIGURES

#### PERFORMANCE

take-off roll distance	187 m
take-off distance	321 m
landing distance	233 m
manoeuvring load factor	+ 4,0 g / - 2,0 g
max. range	480 NM
max. endurance (4.200 rpm)	6 h
fuel consumption (4.200 rpm)	13,4 l/h

#### SPEEDS

V <sub>SO</sub>	stall speed full flaps (40°)	42 kts
V <sub>S</sub>	stall speed clean	44 kts
V <sub>X</sub>	speed for best angle of climb	51 kts
V <sub>Y</sub>	speed for best rate of climb	60 kts
V <sub>A</sub>	manoeuvring speed	88 kts
V <sub>CR</sub>	cruise speed (5.000 rpm)	100 kts
V <sub>NO</sub>	normal operating speed	107 kts
V <sub>H</sub>	max. speed in level flight	110 kts
V <sub>NE</sub>	never exceed speed	134 kts

#### WEIGHT & DIMENSIONS

empty weight (typ. GXe LITE)	310 kg
max. take-off weight MTOW	600 kg
useful load	290 kg
fuel capacity	84 l
wing span	9,32 m
overall length	6,48 m
height	2,28 m
wing area	10,97 m <sup>2</sup>
cabin width	1,19 m
main gear stance	2,1 m



## REMOSS GX - Pricing & Equipment

EQUIPMENT	GXe LITE	GXNXT
<b>ENGINE &amp; PROPELLER</b>		
Rotax 912 ULS 74kW / 100HP	•	•
Slipper Clutch	•	•
Big Starter Engine	•	•
Airbox with carburetor heating and temperature indicator	•	•
Fire protection sleeves	•	•
High-performance cooling system incl. oil thermostat	•	•
REMOSS stainless steel exhaust system	•	•
Electric fuel boost pump	•	•
NEUFORM CR-3-65 3-Blade Propeller	•	•
Altimeter mBar / Hg, 57mm / 2 ¼ "	•	•
Airspeed indicator km/h / kts, 57mm / 2 ¼ "	•	•
C2400 Kompass	•	•
Garmin GPS aera500	1.355,00 €	•
Garmin GPS aera660	1.789,00 €	434,00 €
Garmin GPMAP695	2.298,00 €	943,00 €
Garmin GPS aera795	2.825,00 €	1.470,00 €
FlymapL Germany	5.775,00 €	4.420,00 €
FlymapL Europe Maps	770,00 €	770,00 €
Flymap GSM Modem	831,00 €	831,00 €
PS Engineering PAR200A COM/Audio Panel	-----	•
NAV/COM-Bundle GNC255A NAV/COM & pm8000BTi Audio Panel	-----	4.705,00 €
Garmin GTR225A COM	-----	4.020,00 €
Garmin GNC255A NAV/COM	-----	5.612,00 €
Dynon SkyView 7" display SV-D700 in left panel	-----	•
Dynon Engine Monitoring Module for Rotax 912 UL/S SV-EMS-220/A	-----	•
Dynon Fuelflow Sensor	-----	•
Dynon EMS-Kit Rotax	-----	•
Dynon Air Data Module SV-ADAHRS-200/A	-----	•
Dynon GPS Antenna Module SV-GPS-250/A	-----	•
Dynon Class 1 Mode-S Transponder SV-XPDR-261	-----	•
Dynon System Backup Battery SV-Bat-320	-----	•
Dynon SkyView 7" display SV-D700 in right panel with additional backup battery	-----	3.565,00 €
Dynon SV-ADSB-470 ADS-B-in module	1.412,00 €	1.412,00 €
Dynon Autopilot for SkyView system	3.152,00 €	3.152,00 €
Dynon GPS Mapping Software SV-MAP-270	610,00 €	610,00 €
Dynon FlightDEK D-180	•	-----
LED indicator for flap position	•	-----
BECKER Bundle COM AR6201, XPDR BXP6401	•	-----
ps-engineering PM-3000 Intercom with audio input	765,00 €	-----
Winter pitot tube eLITE	•	-----
Dynon pitot tube with stall warning	56,00 €	•
<b>Dynon Backup Battery</b>	222,00 €	-----
Dynon Sensor Package: fuel flow, fuel pressure, ammeter, manifold pressure, EGT	1.028,00 €	-----
Dynon Performance Package: Dynon Sensor Package, Dynon pitot tube with stall warning, Dynon Backup Battery	1.149,00 €	-----

**Key:**

- Included / basic equipment
- ◊ optional equipment w/o surcharge
- not applicable / available for this version

EQUIPMENT	GXe LITE	GXNXT
<b>SAFETY</b>		
BRS 7-LSA ballistic recovery system	•	•
Magnum 601 ballistic parachute	- 189,00 €	- 189,00 €
12V / 6Ah Battery	•	•
12V / 12Ah Battery	198,00 €	198,00 €
LED landing light HELLA	•	-----
LED landing light Aerosun	347,00 €	•
LED tail light with ACL	•	•
LED wing position lights with ACL	•	•
LED panel lighting with dimmer	-----	•
ELT 406MHz	•	•
PowerFLARM incl. 2nd antenna, Audio & TIS-output <sup>1)</sup>	3.095,00 €	3.095,00 €
AIR Avionics TRX-1500 with display on EFIS <sup>1)</sup>	2.707,00 €	2.707,00 €
<small><sup>1)</sup> GXe LITE in combination with Garmin 695, Garmin 795 or FlymapL possible only</small>		
<b>INTERIOR</b>		
REMOSS eLITE carbon seats, adjustable	•	-----
REMOSS carbon seats, adjustable, leather-fabric upholstery	210,00 €	•
REMOSS carbon seats, adjustable, leather-cinnamon upholstery	2.415,00 €	2.205,00 €
Door pockets & door sidewall fairings	188,00 €	•
Baggage compartment	620,00 €	•
Baggage nets	121,00 €	•
Sun visors	1.084,00 €	•
Heating system	368,00 €	•
Floor carpets	241,00 €	•
Additional air vents in windscreen	683,00 €	•
Interior Pads	497,00 €	497,00 €
Second power lever	165,00 €	•
REMOSS Jet-Stick	•	•
4-point seat belts	•	•
Blue windows with UV protection	•	•
REMOSS safety door lock system	•	•
REMOSS door ventilation	•	•
Controllable fresh air inlet	•	•
Circuit breakers	•	•
12V Receptacle	•	•
Jacks for headsets incl. ANR power	•	•
REMOSS Comfort Package: Door pockets & sidewall fairings, baggage compartment, luggage nets, sun visors, heating system, floor carpets, add. air vents, PM-3000 Intercom	3.301,00 €	-----
<b>EXTERIOR</b>		
Metal wing strut including fairing	•	•
CFRP wing strut	2.790,00 €	2.790,00 €
Metal landing gear, main wheels 4.00-6-8ply, nose wheel 4.00-4-4ply	•	•
Matel landing gear, main wheels 15x6.0-6-6ply, nose wheel 4.00-4-4ply	93,00 €	93,00 €
Landing Gear Fairings (15x6.0 tires w/o wheel pants)	•	•
Standard Decor	•	◊
Premium Decor	228,00 €	•
GXiS Premium Decor	730,00 €	502,00 €
GXiS Special Decor	1.164,00 €	936,00 €
eLITE paintwork	•	-----
Flaps, electrically actuated	•	•
Hydraulic disc brakes w/ parking brake	•	•
Aluminium filler cap	•	•
Folding wings	368,00 €	•
Ceiling hanging equipment	98,00 €	98,00 €
Wing folding kit, not suitable for transport	294,00 €	294,00 €
Glider towing clutch	1.469,00 €	1.469,00 €

All prices shown are exclusive of taxes such as VAT.  
Prices are ex works Pasewalk. Prices show surcharge compared to basic equipment.